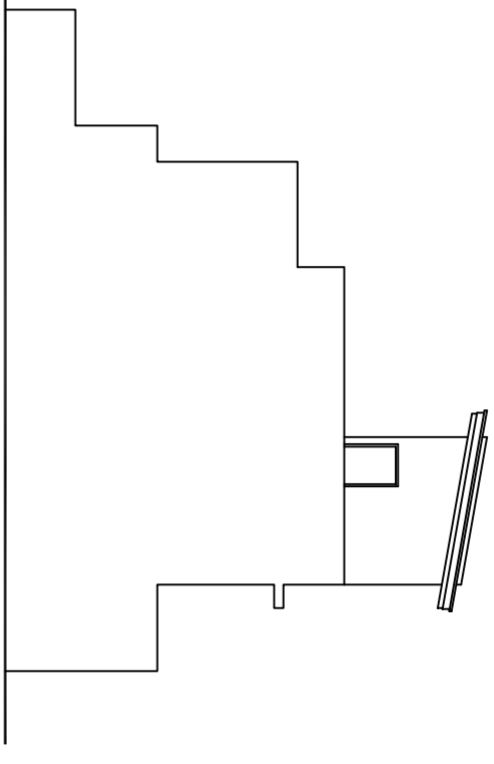
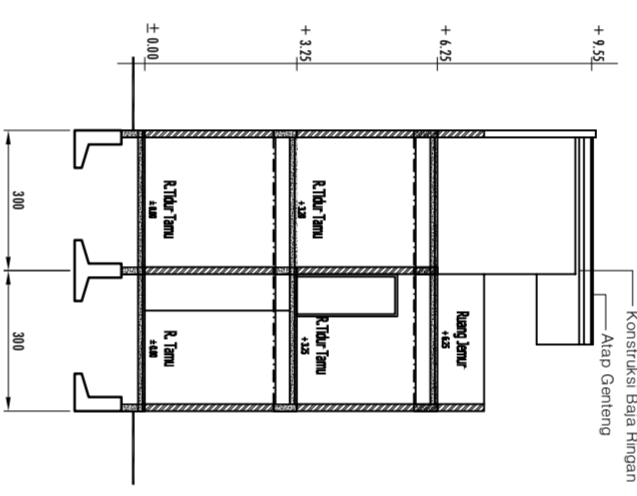


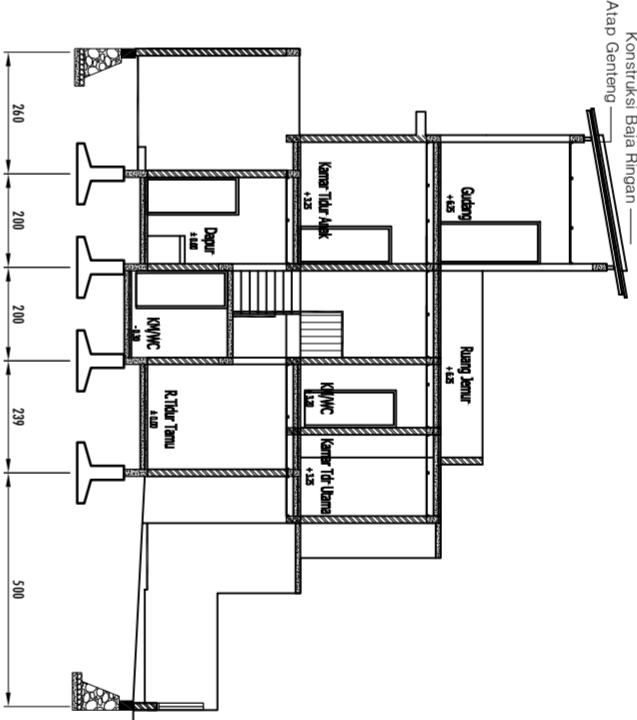
TAMPAK DEPAN
SKALA 1:100



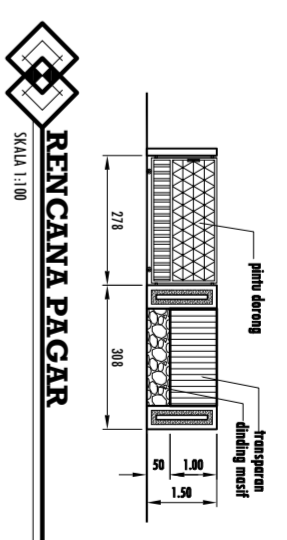
TAMPAK SAMPING
SKALA 1:100



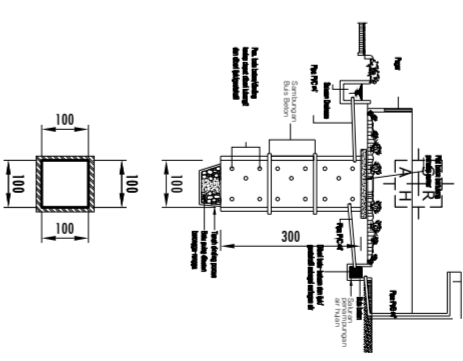
POTONGAN A-A
SKALA 1:100



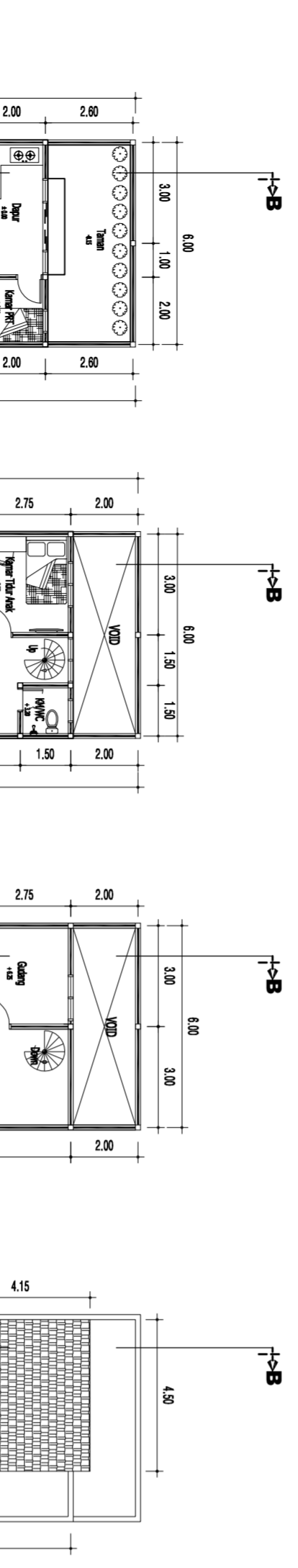
POTONGAN B-B
SKALA 1:100



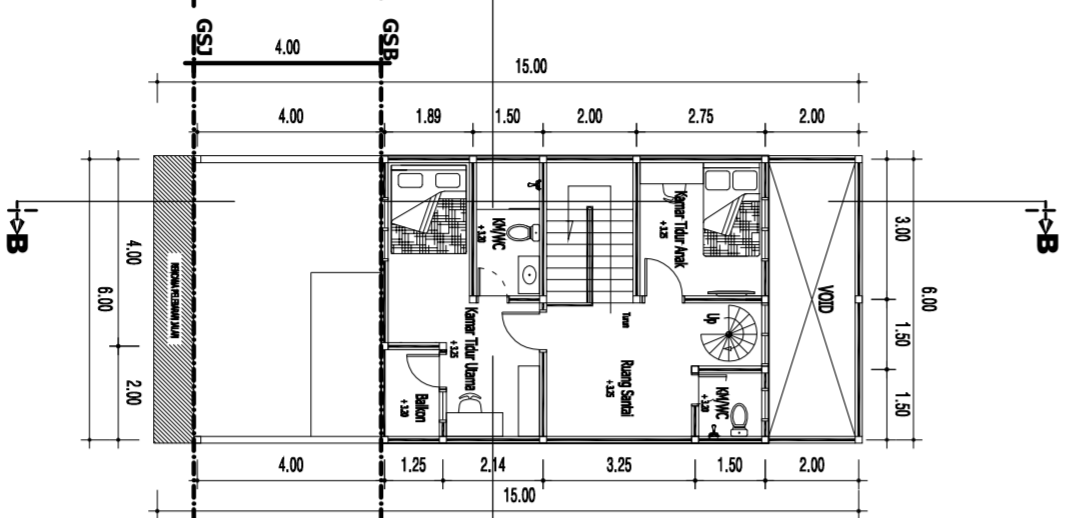
RENCANA PAGAR
SKALA 1:100



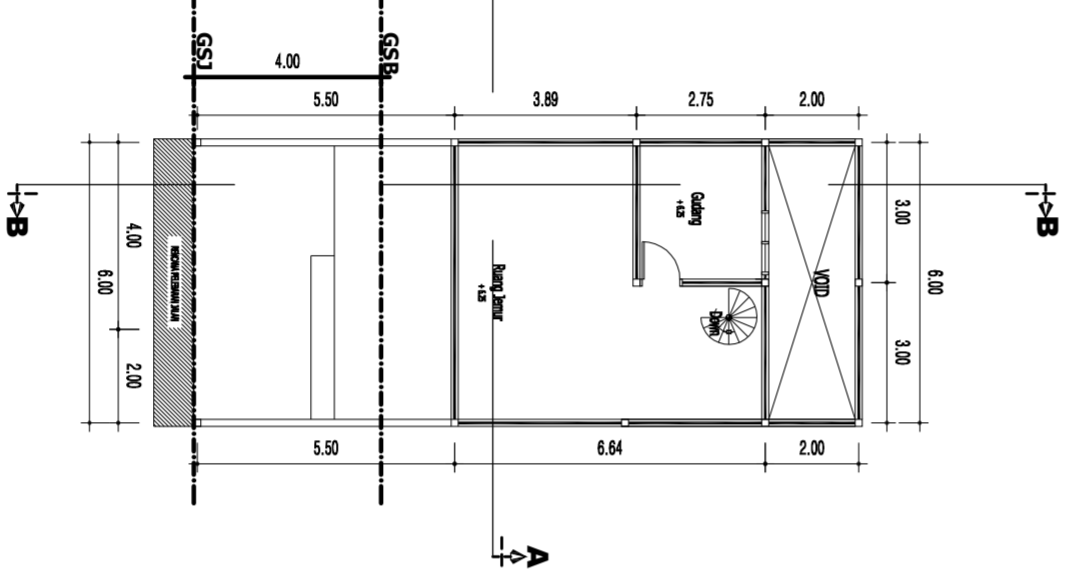
SUMUR RESAPAN AIR HUJAN
SKALA 1:100



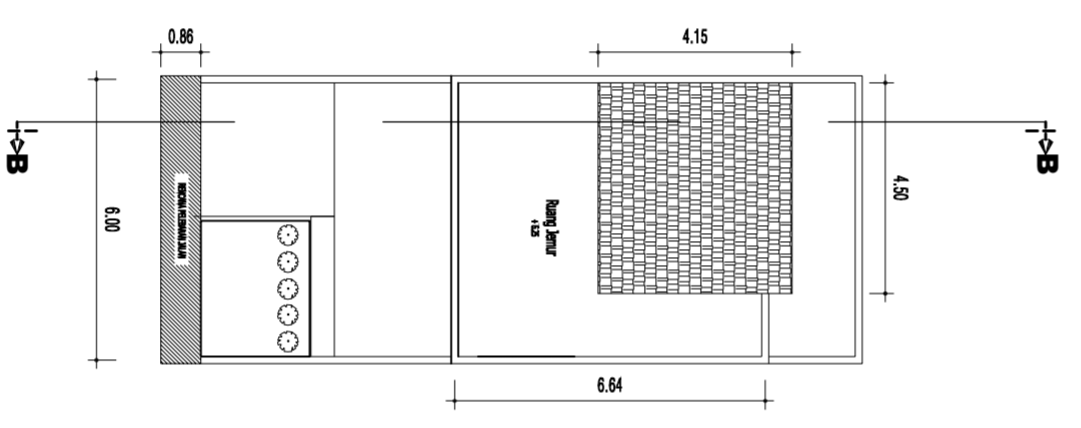
DENAH LANTAI 1
SKALA 1:100



DENAH LANTAI 2
SKALA 1:100



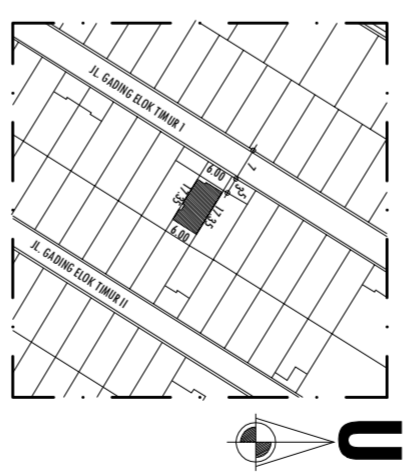
DENAH LANTAI 3
SKALA 1:100



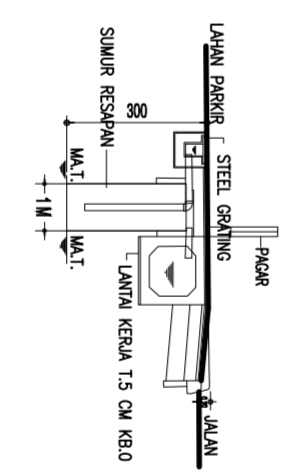
DENAH RENCANA ATAP
SKALA 1:100

TABEL RINCIAN INTERIUS BANGUNAN	RENCANA	BANGUNAN	LUAS DOKOR : 90 M ²
LUAS DOKOR PERSEKAWAN	90 M ²	84,83 M ²	RENC. JUAN : 5,17 M ²
LUAS LANTAI DOKOR BANGUNAN	41,34 M ²	42,415 M ²	L.D.P : 84,83 M ²
LUAS SELUBUNG LANTAI BANGUNAN	128,94 M ²	127,265 M ²	
KOEFISIEN DOKOR BANGUNAN (K.O.B)	48,7 %	50 %	
KOEFISIEN LANTAI BANGUNAN (K.L.B)	1,49	1,5	
KEMUNGKIN BANGUNAN	3	3	LT
PEROKOR		MOBIL	
KOEFISIEN DOKOR HUJAN (K.O.H)	23,15 %	20 %	LUAS DOKOR HUJAN : 18,84 M ²
KOEFISIEN TANPA BENSERENT	0,00	- %	LUAS TMB

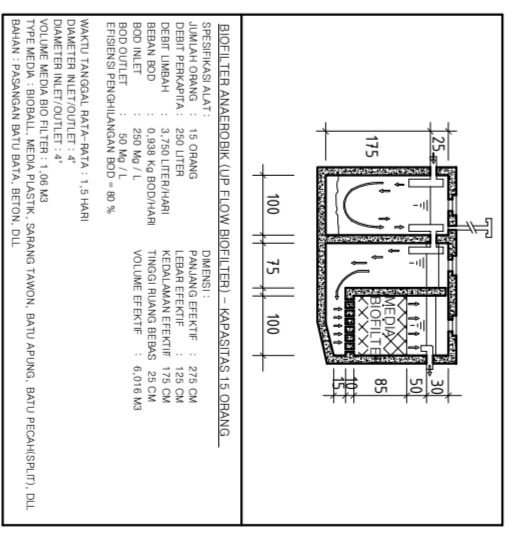
TABEL RINCIAN LUAS BANGUNAN	LUAS
LANTAI	41,34 M ²
1	45,76 M ²
2	39,84 M ²
3	128,94 M ²
JUMLAH	128,94 M ²



STUDIASI
SKALA 1:1000



WATER TRAP
SKALA 1:100



INST. PENGOLOMBAAN AIR LIMBAH
SKALA 1:100

KETERANGAN	
VOLUME SUMUR RESAPAN AIR HUJAN	24 M ³ LUAS DOK. ATAP = 118 SRUAH
Luas DOKOR & Persewaan	51M ²
Kebatuhan	$\frac{51M^2}{25} = 2,04 M^3$
Volume SRAH	1 x 1 x 3 M = 3M ³
Jumlah unit SRAH	1 UNIT SRAH

PROJEK
UMAH TINGGAL
L. GUNUNG MURUK/URUK/07/11
RT. RW. 020/12
KEL. PEGANGSAAN DUA
KEC. KELAPA GADING
JAKARTA UTARA

JUDUL GAMBAR	SKALA
DENAH	1:100
TAMPAK	1:100
POTONGAN	1:100
PAGAR	1:100
S. RESAPAN	1:100
WATER TRAP	1:100
STUDIASI	1:1000
PERENCANA	

DIGAMBAR :
DIPERIKSA :
DISTITUI :
TGA : NO GAMBAR : KODE